

STANDARD ARRIVAL
CHART - INSTRUMENT
(STAR) - ICAO

TRANSITION ALTITUDE
10000 FT

ALMATY APPROACH 118.3
ALMATY RADAR 126.8
ALMATY TOWER 119.4
ALMATY ATIS (EN) 129.8
ALMATY ATIS (RU) 135.1

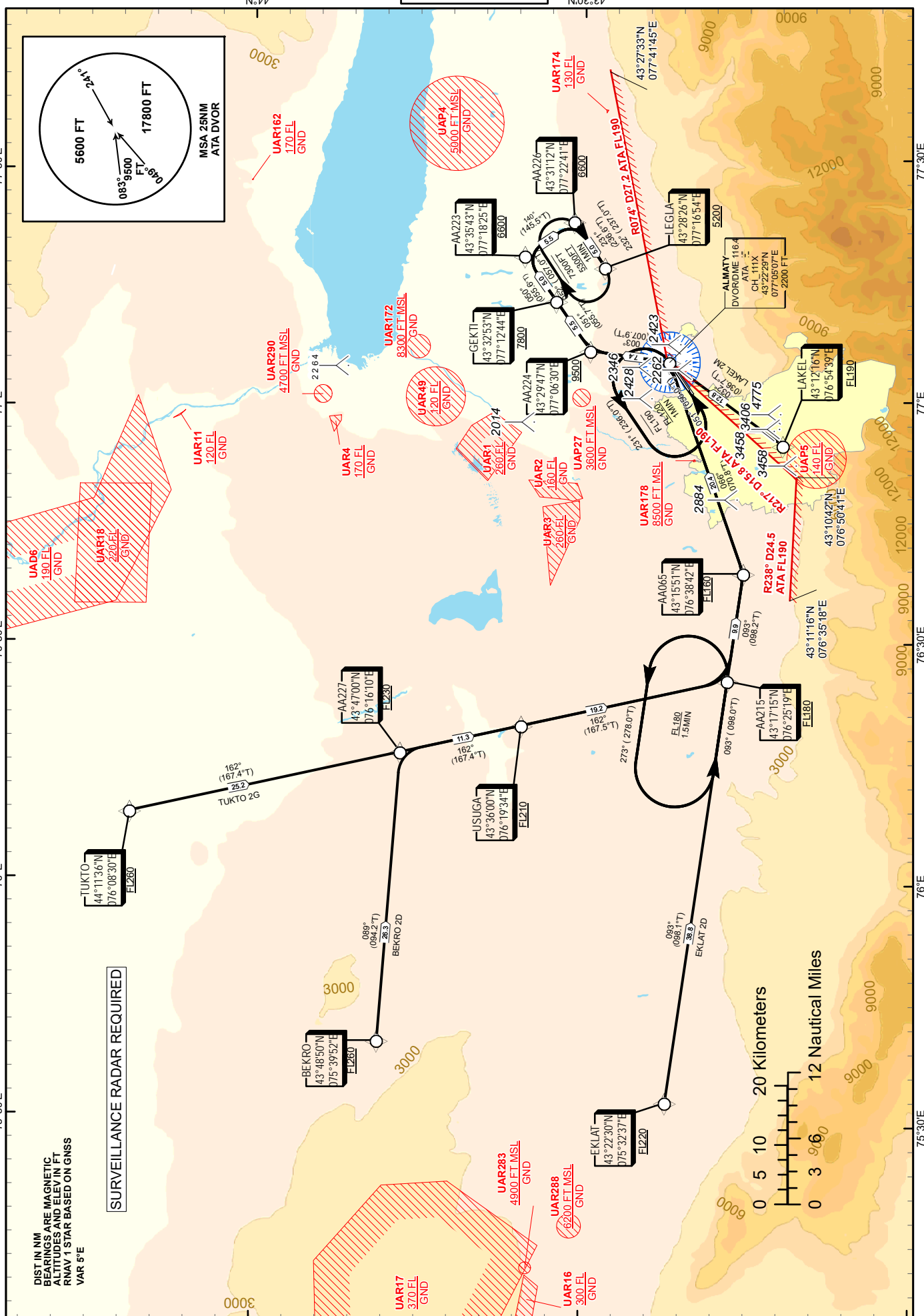
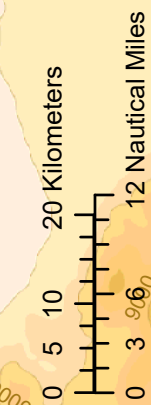
(RNAV 1 STAR BASED ON GNSS)
BEKRO 2D, EKLAT 2D, LAKEI 2M, TUKTO 2G

ALMATY
RWY 23R/ 23L

CHANGE: APP FREQ.

DIST IN NM
BEARINGS ARE MAGNETIC
ALTITUDES AND ELEV IN FT
RNAV 1 STAR BASED ON GNSS
VAR 5°E

SURVEILLANCE RADAR REQUIRED



TABULAR DESCRIPTION

EKLAT 2D											
Serial Number	Path Descriptor	Waypoint Identifier	Fly - over	Course °M(°T)	Magnetic Variation(°)	Distance NM	Turn Direction	Altitude FT	Speed KT	VPA (°)	Navigation Specification
10	IF	EKLAT	-		5.12	0	-	+FL220	-315	-	RNAV1
20	TF	AA215	-	93(98.1)	5.12	38.8	-	+FL180	-280	-	RNAV1
30	TF	AA065	-	93(98.2)	5.12	9.9	-	+FL160	-280	-	RNAV1
40	TF	ATA	-	66(70.8)	5.12	20.4	L	+FL120	-250	-	RNAV1
50	TF	AA224	-	3(7.9)	5.12	7.4	L	+9500	-250	-	RNAV1
60	TF	GEKTI	-	51(55.7)	5.12	5.5	R	+7800	-250	-	RNAV1
70	TF	AA223	-	50(55.6)	5.12	5	-	+6600	-230	-	RNAV1
80	TF	AA226	-	140(145.5)	5.12	5.5	R	+6600	-230	-	RNAV1
90	TF	LEGLA	-	231(236.6)	5.12	5	R	+5200	-230	-	RNAV1
WAYPOINT LIST								WAYPOINT LIST			
EKLAT 2D								LAKEL 2M			
Waypoint Identifier		Coordinates						Waypoint Identifier		Coordinates	
EKLAT	432230.00N	0753237.00E						LAKEL	431216.00N	0765439.00E	
AA215	431714.83N	0762518.51E						ATA	432229.35N	0770506.95E	
AA065	431550.67N	0763842.35E						AA224	432947.20N	0770629.91E	
ATA	432229.35N	0770506.95E						GEKTI	433253.40N	0771244.40E	
AA224	432947.20N	0770629.91E						AA223	433543.23N	0771824.60E	
GEKTI	433253.40N	0771244.40E						AA226	433111.67N	0772241.01E	
AA223	433543.23N	0771824.60E		LEGLA	432825.52N	0771654.27E					
AA226	433111.67N	0772241.01E									
LEGLA	432825.52N	0771654.27E									
TABULAR DESCRIPTION											

LAKEL 2M											
Serial Number	Path Descriptor	Waypoint Identifier	Fly - over	Course °M(°T)	Magnetic Variation(°)	Distance NM	Turn Direction	Altitude FT	Speed KT	VPA (°)	Navigation Specification
10	IF	LAKEL	-		5.12	0	-	+FL190	-315	-	RNAV1
20	TF	ATA	-	32(36.7)	5.12	12.8	-	+FL190	-250	-	RNAV1
30	HM	ATA	+	51(56.0)	5.12	-	L	+FL120	-250	-	RNAV1
10	IF	ATA	-		5.12	-	-	+FL120	-250	-	RNAV1
20	TF	AA224	-	3(7.9)	5.12	7.4	L	+9500	-250	-	RNAV1
30	TF	GEKTI	-	51(55.7)	5.12	5.5	R	+7800	-250	-	RNAV1
40	TF	AA223	-	50(55.6)	5.12	5	-	+6600	-230	-	RNAV1
50	TF	AA226	-	140(145.5)	5.12	5.5	R	+6600	-230	-	RNAV1
60	TF	LEGLA	-	231(236.6)	5.12	5	R	+5200	-230	-	RNAV1

TABULAR DESCRIPTION

TUKTO 2G											
Serial Number	Path Descriptor	Waypoint Identifier	Fly - over	Course °M(°T)	Magnetic Variation(°)	Distance NM	Turn Direction	Altitude FT	Speed KT	VPA (°)	Navigation Specification
10	IF	TUKTO	-		5.12	0	-	+FL260	-315	-	RNAV1
20	TF	AA227	-	162(167.4)	5.12	25.2	-	+FL230	-280	-	RNAV1
30	TF	USUGA	-	162(167.4)	5.12	11.3	-	+FL210	-280	-	RNAV1
40	TF	AA215	-	162(167.5)	5.12	19.2	-	+FL180	-280	-	RNAV1
50	TF	AA065	-	93(98.2)	5.12	9.9	-	+FL160	-280	-	RNAV1
60	TF	ATA	-	66(70.8)	5.12	20.4	L	+FL120	-250	-	RNAV1
70	TF	AA224	-	3(7.9)	5.12	7.4	L	+9500	-250	-	RNAV1
80	TF	GEKTI	-	51(55.7)	5.12	5.5	R	+7800	-250	-	RNAV1
90	TF	AA223	-	50(55.6)	5.12	5	-	+6600	-230	-	RNAV1
100	TF	AA226	-	140(145.5)	5.12	5.5	R	+6600	-230	-	RNAV1
110	TF	LEGLA	-	231(236.6)	5.12	5	R	+5200	-230	-	RNAV1
WAYPOINT LIST											
TUKTO 2G											
Waypoint Identifier	Coordinates										
TUKTO	441136.00N	0760830.00E									
AA227	434700.39N	0761610.10E									
USUGA	433600.00N	0761934.00E									
AA215	431714.83N	0762518.51E									
AA065	431550.67N	0763842.35E									
ATA	432229.35N	0770506.95E									
AA224	432947.20N	0770629.91E									
GEKTI	433253.40N	0771244.40E									
AA223	433543.23N	0771824.60E									
AA226	433111.67N	0772241.01E									
LEGLA	432825.52N	0771654.27E									
TABULAR DESCRIPTION											

WAYPOINT LIST		
BEKRO 2D		
Waypoint Identifier	Coordinates	
BEKRO	434850.00N	0753952.00E
AA227	434700.39N	0761610.10E
USUGA	433600.00N	0761934.00E
AA215	431714.83N	0762518.51E
AA065	431550.67N	0763842.35E
ATA	432229.35N	0770506.95E
AA224	432947.20N	0770629.91E
GEKTI	433253.40N	0771244.40E
AA223	433543.23N	0771824.60E
AA226	433111.67N	0772241.01E
LEGLA	432825.52N	0771654.27E

BEKRO 2D											
Serial Number	Path Descriptor	Waypoint Identifier	Fly - over	Course °M(°T)	Magnetic Variation(°)	Distance NM	Turn Direction	Altitude FT	Speed KT	VPA (°)	Navigation Specification
10	IF	BEKRO	-		5.12	0	-	+FL260	-315	-	RNAV1
20	TF	AA227	-	89(94.2)	5.12	26.3	-	+FL230	-280	-	RNAV1
30	TF	USUGA	-	162(167.4)	5.12	11.3	R	+FL210	-280	-	RNAV1
40	TF	AA215	-	162(167.5)	5.12	19.2	-	+FL180	-280	-	RNAV1
50	TF	AA065	-	93(98.2)	5.12	9.9	-	+FL160	-280	-	RNAV1
60	TF	ATA	-	66(70.8)	5.12	20.4	L	+FL120	-250	-	RNAV1
70	TF	AA224	-	3(7.9)	5.12	7.4	L	+9500	-250	-	RNAV1
80	TF	GEKTI	-	51(55.7)	5.12	5.5	R	+7800	-250	-	RNAV1
90	TF	AA223	-	50(55.6)	5.12	5	-	+6600	-230	-	RNAV1
100	TF	AA226	-	140(145.5)	5.12	5.5	R	+6600	-230	-	RNAV1
110	TF	LEGLA	-	231(236.6)	5.12	5	R	+5200	-230	-	RNAV1